

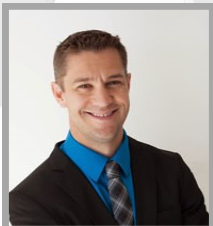
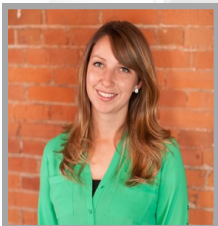


LloydSadd | **CORPORATE** 2017
RISK SEMINAR

Thursday, November 2, 2017 | Edmonton Marriott at River Cree Resort

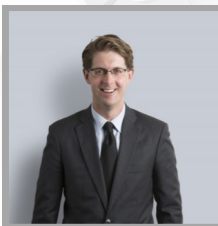
11:00am - 4:30pm, Cocktails & Connections Reception to follow

SPEAKERS AND TOPICS



CANNABIS IN THE WORKPLACE PANEL | *Alison McMahon, Founder & CEO, Cannabis at Work; Kyle Powell, Founder, President & CEO, SureHire; Joe Pendelton, Security Consultant, Fifty3 Degrees North Consulting Group, Retired from Edmonton Police Services*

With the ability to have a cannabis specialist HR professional, the founder of an occupational testing services company and a retired member of the Edmonton Police Service, Lloyd Sadd is proud to present a panel of industry leaders who will be discussing the corporate, testing and legal implications of Cannabis in the Workplace.



ALBERTA'S EMPLOYMENT STANDARD CHANGES | *Thomas Duke, Partner, Labour Employment Lawyer, Miller Thomson LLP*

Alberta's *Employment Standard Code* provides a new minimum standard of employment that will affect 85% of the employers and employees in Alberta. Since the last update of the code in 1988, the workplace and standards have evolved drastically, including growth in part-time jobs, shift work and flexible schedules.



CYBER RISK | *PwC; Blake Mitchell, Sales Director, Network Test Labs*

Cyber risk being on the forefront of every business, and with hacks becoming more frequent in businesses it is important that we continue to bring it to your attention. Joining us are experts from PwC who will be speaking about their experiences, along with Blake Mitchell who will be doing a live hack through the dark web.



GPS (GREAT PROGRAMMABLE SUBCONSCIOUS) FOR SUCCESS | *Wayne Lee, Peak Performance Expert*

If there is one thing peak performance experts agree on, it is that the mind is capable of leading us anywhere. Many people find it difficult to connect the mind with outward action and performance, yet Wayne knows it is crucial to any success. Programming your GPS for success will lead to productivity, teamwork and a great attitude.

*click on the picture to see more about our speakers

We Listen. We Think. We Deliver.

REGISTRATION INFORMATION

Lloyd Sadd, along with our sponsors, are proud to host this exclusive event open to forward-thinking entrepreneurs and executives doing business in Alberta's private, public and not for profit sectors. Seating is very limited, so register early!

WHO SHOULD ATTEND? This event is geared towards Alberta based business owners, C-level executives and senior management.

COST:

Lloyd Sadd Clients	Event Sponsors	General Registrations
No charge. Contact your Account Executive or Vanessa Lupus for your promo code.	No charge* Contact Vanessa Lupus for the promo code. <small>*General and Break Sponsors, tickets are limited.</small>	\$300 Payable by cheque only. Registration will be confirmed via email once cheque is received.

BRING A GUEST! We welcome you to forward this invitation to other business owners in the Alberta region who would benefit from this event. Lloyd Sadd clients can bring up to two guests from outside of their organization using the promo code.

We Listen. We Think. We Deliver.

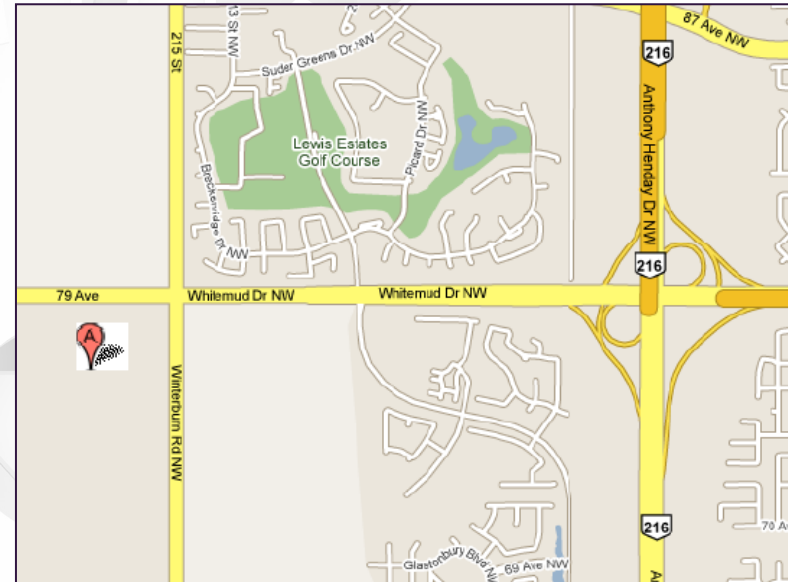
[CLICK HERE TO REGISTER](#)

AGENDA AND LOCATION

- 11:00am** Registration and Luncheon
- 11:30am** Cannabis in the Workplace
- 1:15pm** Break
- 1:30pm** Alberta's Employment Standard Changes
- 2:00pm** Cyber—PwC
- 2:30pm** Live Cyber Hack
- 3:00pm** Break
- 3:30pm** GPS for Success
- 4:30pm** Cocktails & Connection Reception

- Edmonton Marriott at River Cree Resort -

300 East Lapotac Blvd, Edmonton AB | Complimentary On-Site Parking



For hotel reservations, call 1.800.960.4913 and reference the “Lloyd Sadd Insurance Room Block” for a reduced rate while rooms are available.

[CLICK HERE TO REGISTER](#)

THANK YOU TO OUR SPONSORS

- KEYNOTE SPONSOR -



is proud to sponsor Wayne Lee as the key note speaker.

- COCKTAIL SPONSOR -



- LUNCH SPONSOR -



- BREAK SPONSORS -



- GENERAL SPONSORS -



*click on the pictures to see more about our sponsors